

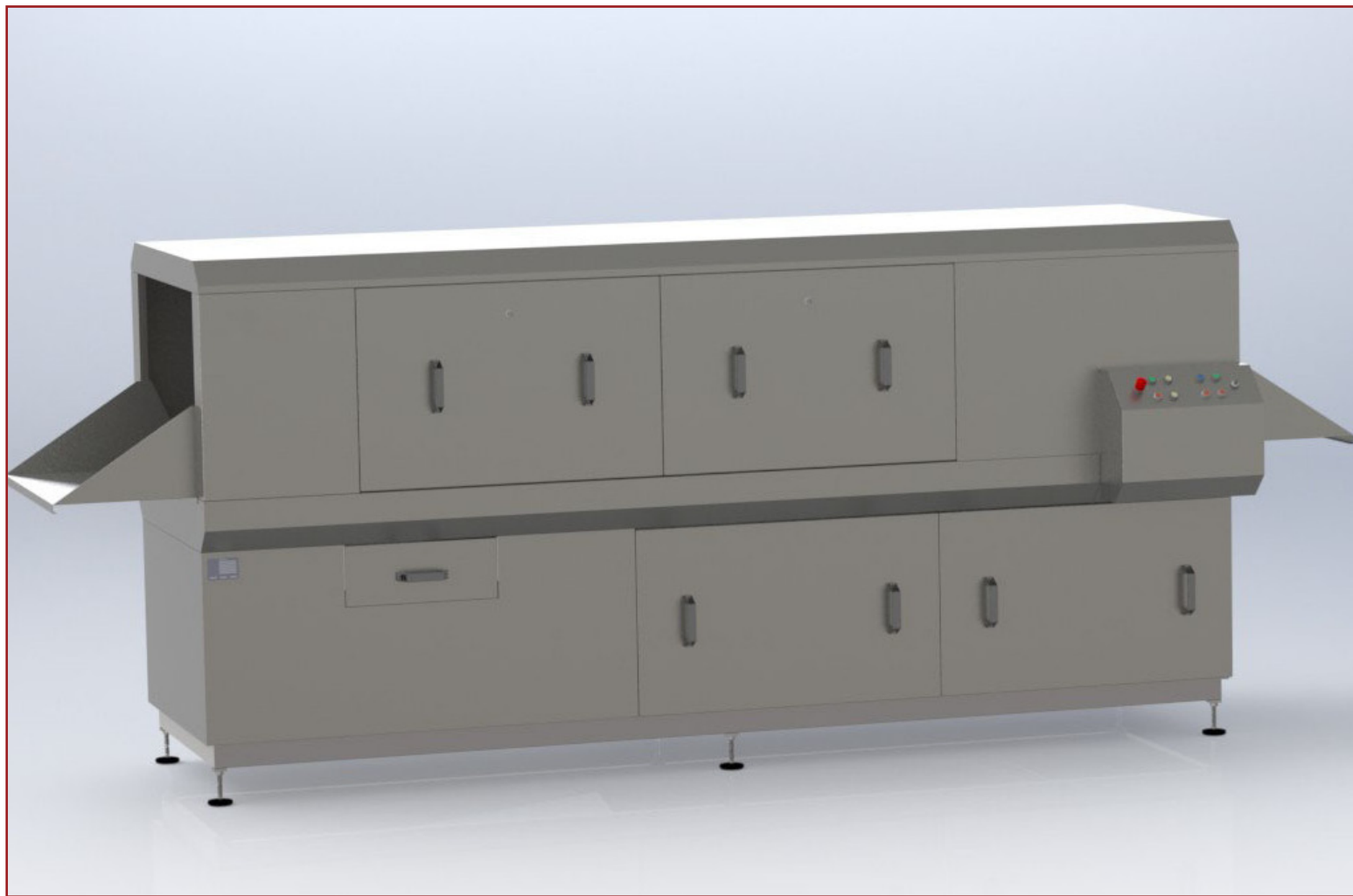
HATCHERY AUTOMATION

Tray washer

TW-350



Kummerowsvej 3
9400 Nørresundby
Tlf.: (+45) 9631 2020
Fax.: (+45) 9631 2021
www.nordland.dk



- Cleaning capacity of 350 standard trays or baskets per hour
- Superior cleaning with pivoting spray nozzles
- Stainless steel construction
- Easy to operate
- Easy to clean
- Low power and water consumption
- Speed adjustable according to degree of dirt

Technical description

TW-350

■ TW-350

Nordland Automatic's small capacity industrial tray washer, the TW-350, consists of a 3,000 mm main washing section, a 500 mm rinsing section with water separation and a transport system.

■ Main washing section

The main washing section features 4 fixed and 4 rotating spray tubes with flat beam sprayers. The nozzles are easy to install and remove thanks to a clip system. The 400 l water tank has an automatic tank filling system and electrical heating elements of 27 kW.

Temperature can be adjusted by a thermostat. In addition, the tray washer is equipped with a filter system with removable filter.

■ Rinsing section

The rinsing section has a separated water supply and consists of a spray tube with flat beam sprayers, which are triggered by the transport system. Water consumption can be adjusted from 6 to 8 l/min.

Technical specifications

Capacity:
350 standard trays or
baskets per hour

Electrical supply:
3x400 V 50 Hz

Power consumption:
38,5 kW

Water consumption:
6-8 l/min

Noise level:
77 dB

Material:
Stainless steel 304

Dimensions (LxWxH):
4440 x 1300 x 1710 mm

■ Transport system

The transport system has 2 stainless steel transport chains as well as side guides, an adjustable retainer and removable entrance and exit plates. You can adjust the speed from 2 to 5 m/min according to the degree of soil.

Nordland Automatic's tray washer is designed for easy maintenance: both the motor area and the tunnel drains, with 4 hatches on all sides, are easily accessible.

Tunnel length
3500 mm

Passage height
200 mm

Passage width
800 mm

Entrance height
965 mm

 **Nordland**
automatic a/s